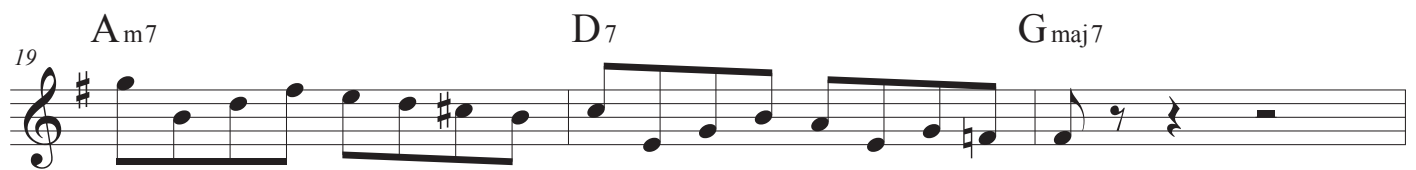
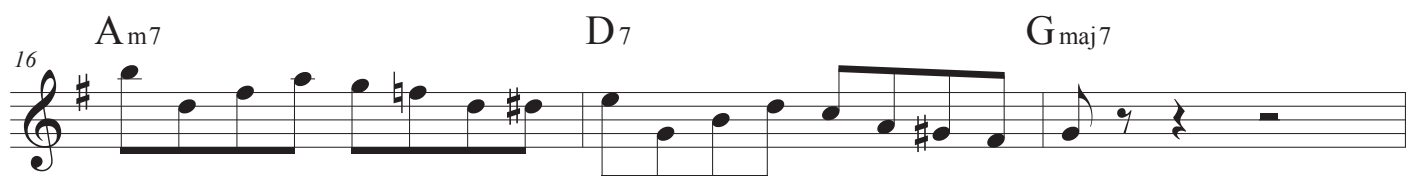
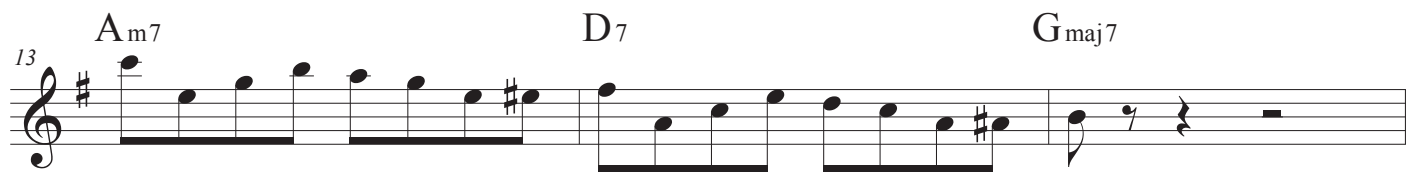
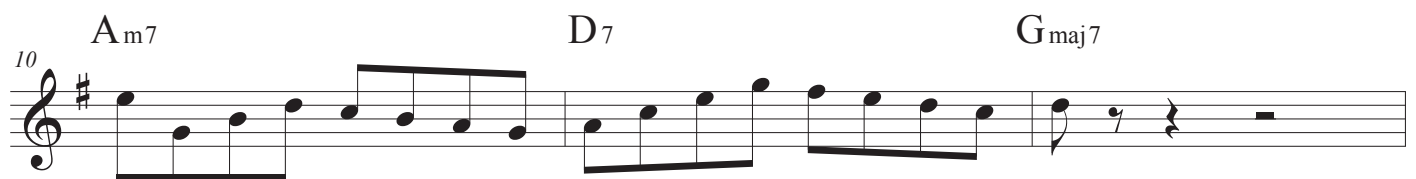
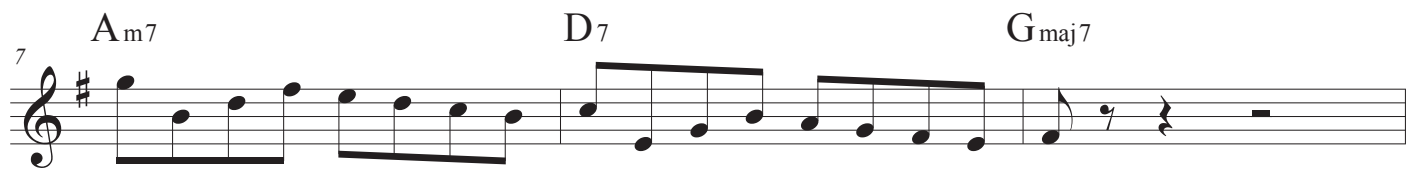


Eb

BROKEN CHORDS



25 A_{m7} D_7 G_{maj7}

Measures 25-28: Treble clef, key of D major (one sharp). Measure 25 starts with a quarter rest, followed by eighth notes D4, E4, F#4, G4, A4, B4, C5, D5. Measure 26 continues with eighth notes D5, C5, B4, A4, G4, F#4, E4, D4. Measure 27 continues with eighth notes D4, E4, F#4, G4, A4, B4, C5, D5. Measure 28 continues with eighth notes D5, C5, B4, A4, G4, F#4, E4, D4, followed by a quarter rest.

29 A_{m7} D_7 G_{maj7}

Measures 29-32: Treble clef, key of D major (one sharp). Measure 29 starts with a quarter rest, followed by eighth notes D4, E4, F#4, G4, A4, B4, C5, D5. Measure 30 continues with eighth notes D5, C5, B4, A4, G4, F#4, E4, D4. Measure 31 continues with eighth notes D4, E4, F#4, G4, A4, B4, C5, D5. Measure 32 continues with eighth notes D5, C5, B4, A4, G4, F#4, E4, D4, followed by a quarter rest.

33 A_{m7} D_7 G_{maj7}

Measures 33-36: Treble clef, key of D major (one sharp). Measure 33 starts with a quarter rest, followed by eighth notes D4, E4, F#4, G4, A4, B4, C5, D5. Measure 34 continues with eighth notes D5, C5, B4, A4, G4, F#4, E4, D4. Measure 35 continues with eighth notes D4, E4, F#4, G4, A4, B4, C5, D5. Measure 36 continues with eighth notes D5, C5, B4, A4, G4, F#4, E4, D4, followed by a quarter rest.